

MOUNTING INSTRUCTIONS

1

1b

2

3

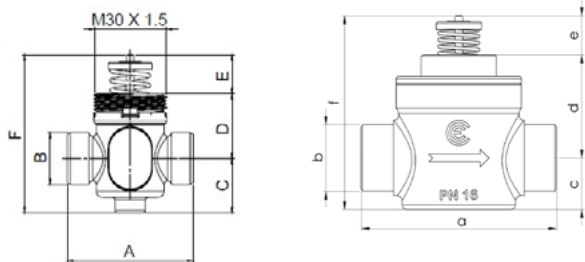
4

With MVT and MVC

5

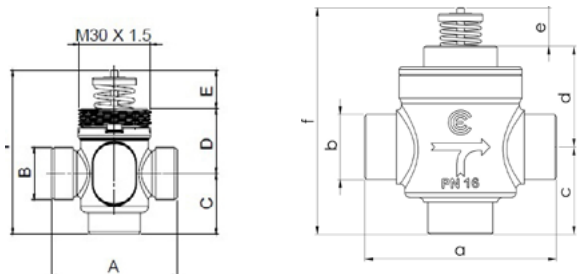
The performances stated in this sheet can be modified without any prior notice.

2-way



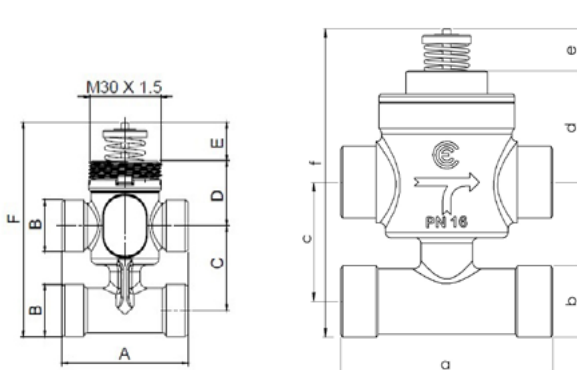
valve	A	B	C	D	E	F	actuator
VSXT09P VSXT10P VSXT11P VSXT12P VSXT13P VSXT13	52	G1/2" M	22,5	27	15,6	65	MVT203S MVT403S MVT503S MVC503R
VSXT21 VSXT21P	56	G3/4" M	23,6	25,8			
VSXT24P VSXT26P	78	G3/4" M	20,5	41	77,1		
VSXT28P	78	G1" M		41			

3-way



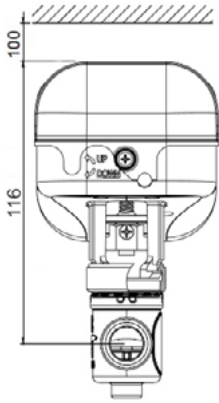
valve	A	B	C	D	E	F	actuator
VMXT09P VMXT10P VMXT11P VMXT12P VMXT13P VMXT13	52	G1/2" M	25	27	15,6	67,6	MVT203S MVT403S MVT503S MVC503R
VMXT21 VMXT21P	56	G3/4" M	34	25,8			
VMXT24P VMXT26P	78	G3/4" M	35,5	41	92,6		
VMXT28P		G1" M					

3-way (4 ports)

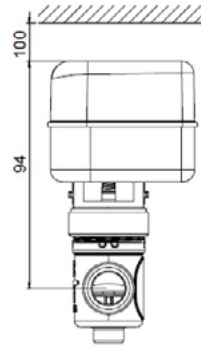


valve	A	B	C	D	E	F	actuator
VTXT09P VTXT10P VTXT11P VTXT12P VTXT13P VTXT13	52	G1/2" M	35	27	15,6	88,4	MVT203S MVT403S MVT503S MVC503R
VTXT09P4 VTXT10P4 VTXT11P4 VTXT12P4 VTXT13P4 VTXT1P4	56	G1/2" M	40				
VTXT21 VTXT21P	56	G3/4" M	50	25,8	98,4		
VTXT21P4	56	G3/4" M	40	25,8	88,4		
VTXT24P VTXT26P	78	G3/4" M	44	41	107,6		

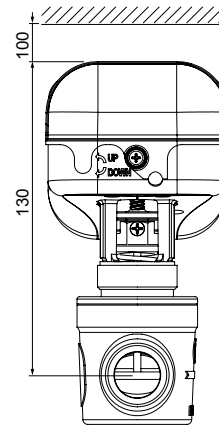
VSXT + MVC503R



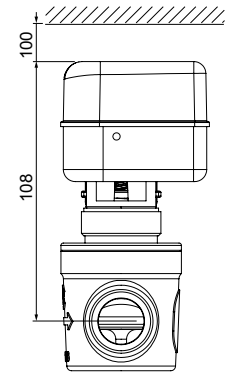
VSXT + MVT.03R



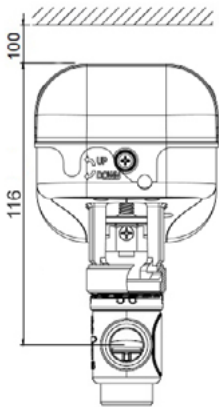
**VSXT24P
VSXT26P
VSXT28P** | + MVC503R



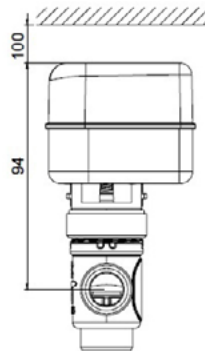
**VSXT24P
VSXT26P
VSXT28P** | + MVT.03S



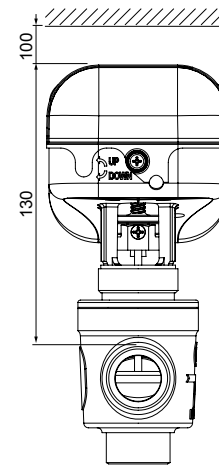
VMXT + MVC503R



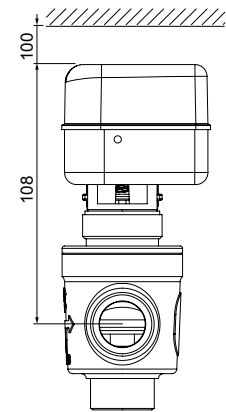
VMXT + MVT.03R



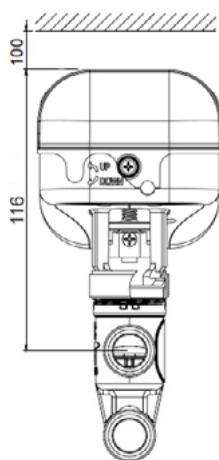
**VMXT24P
VMXT26P
VMXT28P** | + MVC503R



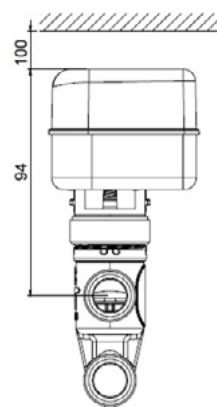
**VMXT24P
VMXT26P
VMXT28P** | + MVT.03S



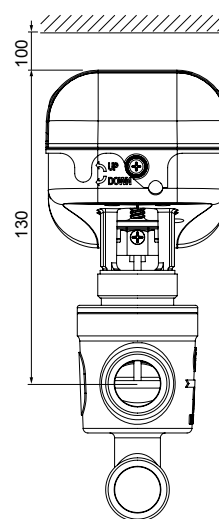
VTXT + MVC503R



VTXT + MVT.03R



**VTXT24P
VTXT26P** | + MVC503R



**VTXT24P
VTXT26P** | + MVT.03S

